



Pittsburgh **PARKING** Authority

The Value Parking Network

GENERAL INFORMATION REGARDING THE SHADYSIDE GARAGE

714 BELLEFONTE STREET, PITTSBURGH, PA 15232

The Shadyside Garage is a five-level, stand-alone structure located in the Shadyside Business District and neighborhood.

It was opened in 1992 and has 208 parking spaces.

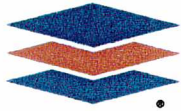
The Shadyside Garage functions as a single helix with two-way traffic and a non-parking ramp between levels.

The structural system consists of cast-in-place, post-tensioned concrete slabs supported by structural steel beams and columns.

You can enter and exit the garage from Bellefonte Street (it is one way), which is a half block off of Walnut Street, which is one of the main business corridors in Shadyside.

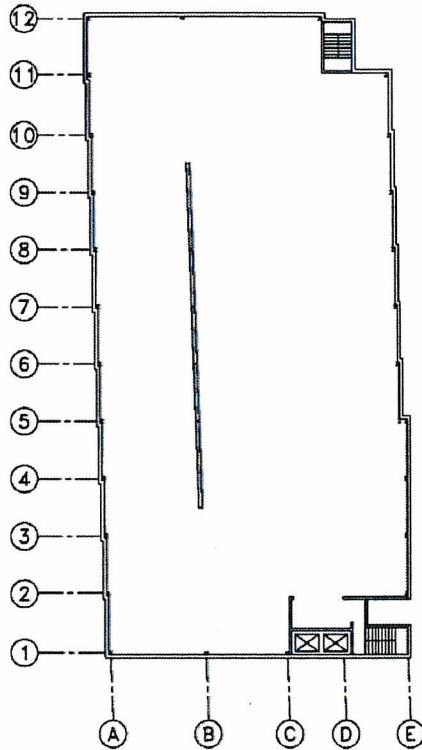
Total Area of garage:	83,224 sf.
Typical Floor area:	16,895 sf.
Maximum Dimensions:	191' x 100'
Typical Bay Dimensions:	63'-6" x 17'-0"
Architectural Shape:	Rectangular
Year Opened:	1992
Number of Levels:	4 structurally supported + 1 slab-on-grade
Total Number of Spaces in garage:	208
Parking on Grade:	Yes
Retail Space within garage:	No
Below Grade parking:	Yes
Construction Type:	Cast-in-place, post-tensioned concrete slabs, structural steel beams and columns
Garage Functionality:	Two-way single helix with non-parking ramp between levels
Maximum Clearance Height:	8'2" Basement/6'7" 2-4

SEE NEXT PAGE: SHADYSIDE GARAGE TYPICAL FLOOR PLAN



Pittsburgh **PARKING** Authority

The Value Parking Network



SHADYSIDE PARKING GARAGE
TYPICAL FLOOR PLAN

