



Pittsburgh **PARKING** Authority

The Value Parking Network

GENERAL INFORMATION REGARDING THE WOOD ALLIES GARAGE

228 BOULEVARD OF THE ALLIES, PITTSBURGH, PA 15222

The Wood Allies Garage is a ten-level structure opened in 1984.

Parking is limited to level 2 and above because the first floor is occupied by the Pittsburgh Parking Authority Main Offices.

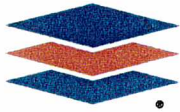
It has a capacity of 541 vehicles and functions as a double-threaded helix with one-way traffic.

The structural system of the garage consists of cast-in-place, post-tensioned concrete floor slabs supported by structural steel beams and columns.

The Wood Allies Garage has an entrance and exit on the Boulevard of the Allies. It also has an exit onto First Avenue, which is a one-way street heading toward Stanwix Street.

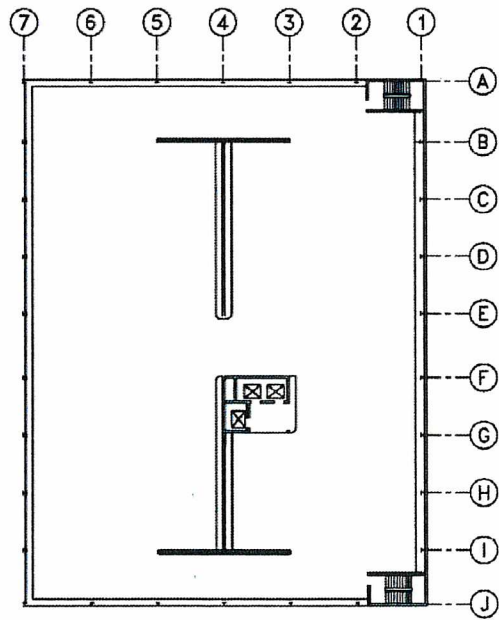
Total Area of garage:	172,105 sf.
Typical Floor area:	18,445 sf.
Maximum Dimensions:	155' x 248'
Typical Bay Dimensions:	59'-6" x 17'-0"
Architectural Shape:	Rectangular
Year Opened:	1984
Number of Levels:	9 + structurally supported
Total Number of Spaces in garage:	541
Parking on Grade:	No
Retail Space within garage:	No
Below Grade parking:	No
Construction Type:	Cast-in-place, post-tensioned slabs structural steel beams and columns
Garage Functionality:	One-way double helix
Maximum Clearance Height:	6'6"

SEE NEXT PAGE: WOOD ALLIES GARAGE TYPICAL FLOOR PLAN



Pittsburgh **PARKING** Authority

The Value Parking Network



WOOD ALLIES PARKING GARAGE
TYPICAL FLOOR PLAN

